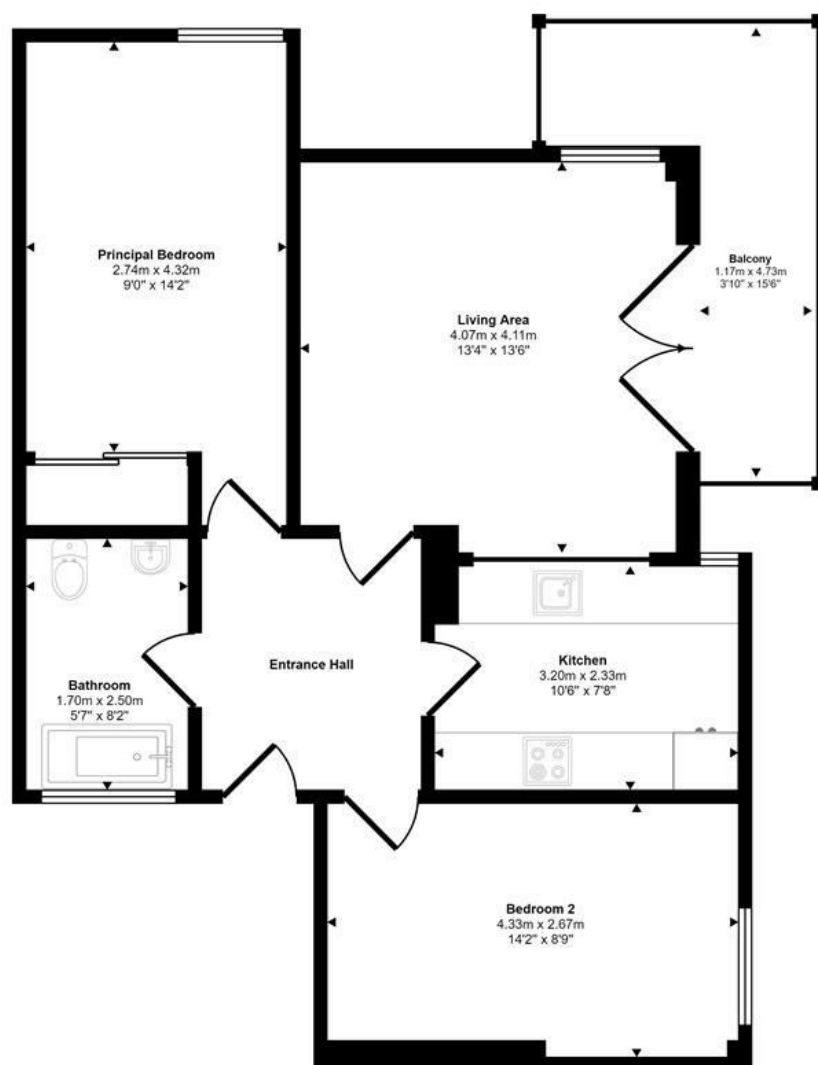




Geoffrey Watling Way | Norwich |
Guide Price £220,000

abbotFox

Approx Gross Internal Area
62 sq m / 671 sq ft



Floorplan

This floorplan is only for illustrative purposes and is not to scale. Measurements of rooms, doors, windows, and any items are approximate and no responsibility is taken for any error, omission or mis-statement. Icons of items such as bathroom suites are representations only and may not look like the real items. Made with Made Snappy 360.

Energy Efficiency Rating		
	Current	Potential
Very energy efficient - lower running costs		
(92 plus) A		
(81-91) B		
(69-80) C		
(55-68) D		63
(39-54) E		63
(21-38) F		
(1-20) G		
Not energy efficient - higher running costs		
England & Wales	EU Directive 2002/91/EC	

Disclaimer – In accordance with the Property Misdescriptions Act, the company gives notice that all descriptions, references to condition, necessary permissions for use and other details are given in good faith and believed to be correct, but any intending lessees do not rely on them as statements of fact, but must satisfy themselves by inspection or other means, as to their accuracy.



abbotFox presents this spacious, two bedroom first floor apartment. With a wrap around balcony, overlooking the River Wensum, this home offers a bright and stylish finish throughout, perfect for any buyer looking to enjoy the convenience of City living. The accommodation comprises; entrance hall, lounge opening up onto the balcony, kitchen, two double bedrooms and a family bathroom. An internal viewing comes highly recommended.

Guide price £220,000 - £230,000

